

Old Tappan Schools

The Newsletter of Our Public Schools

<p>December</p> <p>23 12:30 PM Dismissal 26-30 Holiday Recess-Closed</p>	<table border="1"> <tr><th colspan="7">DECEMBER (17)</th></tr> <tr><th>S</th><th>M</th><th>T</th><th>W</th><th>Th</th><th>F</th><th>S</th></tr> <tr><td></td><td></td><td></td><td></td><td>1</td><td>2</td><td>3</td></tr> <tr><td>4</td><td>5</td><td>6</td><td>7</td><td>8</td><td>9</td><td>10</td></tr> <tr><td>11</td><td>12</td><td>13</td><td>14</td><td>15</td><td>16</td><td>17</td></tr> <tr><td>18</td><td>19</td><td>20</td><td>21</td><td>22</td><td>23</td><td>24</td></tr> <tr><td>25</td><td>26</td><td>27</td><td>28</td><td>29</td><td>30</td><td>31</td></tr> </table>	DECEMBER (17)							S	M	T	W	Th	F	S					1	2	3	4	5	6	7	8	9	10	11	12	13	14	15	16	17	18	19	20	21	22	23	24	25	26	27	28	29	30	31	<p>May</p> <p>29 Memorial Day - Closed</p>	<table border="1"> <tr><th colspan="7">MAY (22)</th></tr> <tr><th>S</th><th>M</th><th>T</th><th>W</th><th>Th</th><th>F</th><th>S</th></tr> <tr><td></td><td>1</td><td>2</td><td>3</td><td>4</td><td>5</td><td>6</td></tr> <tr><td>7</td><td>8</td><td>9</td><td>10</td><td>11</td><td>12</td><td>13</td></tr> <tr><td>14</td><td>15</td><td>16</td><td>17</td><td>18</td><td>19</td><td>20</td></tr> <tr><td>21</td><td>22</td><td>23</td><td>24</td><td>25</td><td>26</td><td>27</td></tr> <tr><td>28</td><td>29</td><td>30</td><td>31</td><td></td><td></td><td></td></tr> </table>	MAY (22)							S	M	T	W	Th	F	S		1	2	3	4	5	6	7	8	9	10	11	12	13	14	15	16	17	18	19	20	21	22	23	24	25	26	27	28	29	30	31			
DECEMBER (17)																																																																																																					
S	M	T	W	Th	F	S																																																																																															
				1	2	3																																																																																															
4	5	6	7	8	9	10																																																																																															
11	12	13	14	15	16	17																																																																																															
18	19	20	21	22	23	24																																																																																															
25	26	27	28	29	30	31																																																																																															
MAY (22)																																																																																																					
S	M	T	W	Th	F	S																																																																																															
	1	2	3	4	5	6																																																																																															
7	8	9	10	11	12	13																																																																																															
14	15	16	17	18	19	20																																																																																															
21	22	23	24	25	26	27																																																																																															
28	29	30	31																																																																																																		
<p>January</p> <p>16 Martin Luther King Day-Closed Prof. Dev. Day - Faculty</p>	<table border="1"> <tr><th colspan="7">JANUARY (21)</th></tr> <tr><th>S</th><th>M</th><th>T</th><th>W</th><th>Th</th><th>F</th><th>S</th></tr> <tr><td>1</td><td>2</td><td>3</td><td>4</td><td>5</td><td>6</td><td>7</td></tr> <tr><td>8</td><td>9</td><td>10</td><td>11</td><td>12</td><td>13</td><td>14</td></tr> <tr><td>15</td><td>16</td><td>17</td><td>18</td><td>19</td><td>20</td><td>21</td></tr> <tr><td>22</td><td>23</td><td>24</td><td>25</td><td>26</td><td>27</td><td>28</td></tr> <tr><td>29</td><td>30</td><td>31</td><td></td><td></td><td></td><td></td></tr> </table>	JANUARY (21)							S	M	T	W	Th	F	S	1	2	3	4	5	6	7	8	9	10	11	12	13	14	15	16	17	18	19	20	21	22	23	24	25	26	27	28	29	30	31					<p>June</p> <p>19 12:30 PM Dismissal 20 12:30 PM Dismissal Last Day for Students* Date was changed from 6/23 because three (3) emergency closings were not used. Last two days of school are 12:30 PM dismissals.</p>	<table border="1"> <tr><th colspan="7">JUNE (17)</th></tr> <tr><th>S</th><th>M</th><th>T</th><th>W</th><th>Th</th><th>F</th><th>S</th></tr> <tr><td></td><td></td><td></td><td></td><td>1</td><td>2</td><td>3</td></tr> <tr><td>4</td><td>5</td><td>6</td><td>7</td><td>8</td><td>9</td><td>10</td></tr> <tr><td>11</td><td>12</td><td>13</td><td>14</td><td>15</td><td>16</td><td>17</td></tr> <tr><td>18</td><td>19</td><td>20</td><td>21</td><td>22</td><td>23</td><td>24</td></tr> <tr><td>25</td><td>26</td><td>27</td><td>28</td><td>29</td><td>30</td><td></td></tr> </table>	JUNE (17)							S	M	T	W	Th	F	S					1	2	3	4	5	6	7	8	9	10	11	12	13	14	15	16	17	18	19	20	21	22	23	24	25	26	27	28	29	30	
JANUARY (21)																																																																																																					
S	M	T	W	Th	F	S																																																																																															
1	2	3	4	5	6	7																																																																																															
8	9	10	11	12	13	14																																																																																															
15	16	17	18	19	20	21																																																																																															
22	23	24	25	26	27	28																																																																																															
29	30	31																																																																																																			
JUNE (17)																																																																																																					
S	M	T	W	Th	F	S																																																																																															
				1	2	3																																																																																															
4	5	6	7	8	9	10																																																																																															
11	12	13	14	15	16	17																																																																																															
18	19	20	21	22	23	24																																																																																															
25	26	27	28	29	30																																																																																																
<p>Adopted: 1/24/2022 Revised: 4/24/2023</p>	<p>If necessary, due to unexpected closings, the April vacation may be abbreviated in part or in whole. Therefore, no plans, which cannot be changed, should be made for the Spring Recess. The Board of Education reserves the right to make adjustments to the calendar as deemed necessary.</p>	<p>*Three (3) emergency closing days have been built into the school calendar. In the event these days are not used, they will be "given back" through a reduction in the number of school days. When this information becomes available, it will be communicated to parents/guardians following a decision by the Board of Education.</p>	<p>Number of School Days</p> <table border="1"> <tr><th></th><th>Students</th><th>Staff</th></tr> <tr><td>Sept.</td><td>18</td><td>20</td></tr> <tr><td>Oct.</td><td>20</td><td>20</td></tr> <tr><td>Nov.</td><td>18</td><td>18</td></tr> <tr><td>Dec.</td><td>17</td><td>17</td></tr> <tr><td>Jan.</td><td>21</td><td>22</td></tr> <tr><td>Feb.</td><td>15</td><td>15</td></tr> <tr><td>March</td><td>23</td><td>23</td></tr> <tr><td>April</td><td>14</td><td>14</td></tr> <tr><td>May</td><td>22</td><td>22</td></tr> <tr><td>June</td><td>17</td><td>17</td></tr> <tr><td>Total*</td><td>185</td><td>188</td></tr> </table>		Students	Staff	Sept.	18	20	Oct.	20	20	Nov.	18	18	Dec.	17	17	Jan.	21	22	Feb.	15	15	March	23	23	April	14	14	May	22	22	June	17	17	Total*	185	188																																																														
	Students	Staff																																																																																																			
Sept.	18	20																																																																																																			
Oct.	20	20																																																																																																			
Nov.	18	18																																																																																																			
Dec.	17	17																																																																																																			
Jan.	21	22																																																																																																			
Feb.	15	15																																																																																																			
March	23	23																																																																																																			
April	14	14																																																																																																			
May	22	22																																																																																																			
June	17	17																																																																																																			
Total*	185	188																																																																																																			

Revised Year-End 2022-2023 Calendar

The last day of school will be Tuesday, 20 June 2023. Monday and Tuesday, 19 and 20 June, will be early dismissals. See Page 8 for the full calendar.

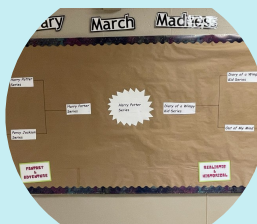
The Board of Education approved a revised 2022-2023 calendar for the remainder of this school year. The three (3) unused emergency closure days have been returned at the end of June. Ms. Boyce and Ms. Santa will share year-end activity dates and details in the coming weeks.



April Showers
... bring May flowers.
Students celebrate the spring weather.



Peer Mentors
NVOT students discuss strategies for peer pressure with middle schoolers.



Celebrate School Library Month
School libraries expose us to genres of literature.

3-D ART
Forms of sculpture.

LARGE-SCALE ART
Scaling proportions.

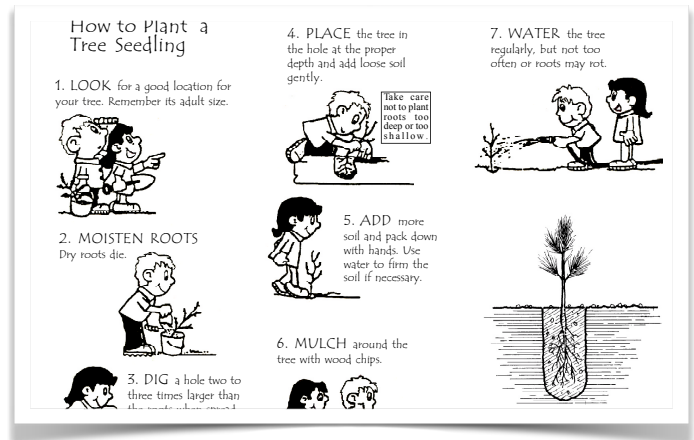
POP ART
Real-world objects.

Celebrating Arbor Day

Elementary school students will recognize the importance of trees, nature, and our beautiful environment.

To commemorate National Arbor Day, which is celebrated on the last Friday in April, the Old Tappan Environmental Commission will celebrate Arbor Day with TBD's third graders. Arbor Day is a celebration of nature and our environment.

Arbor Day, meaning "tree day" based on its Latin root, is a time to celebrate the planting and preservation of trees. In addition to learning about the importance of caring for trees and our environment, the children learned about the origination of Arbor Day. Mr. Julius Morton moved to Nebraska in the 1870s and planted a variety of trees on his 160 acres of property. He published informative newspaper articles about his trees. In 1872, Morton proposed a day when all Nebraskans would plant trees in the community. In 1882, schools across the country started to participate as well. In 1970, Arbor Day was recognized nationwide.



“The creation of a thousand forests is in one acorn.” - Ralph Waldo Emerson

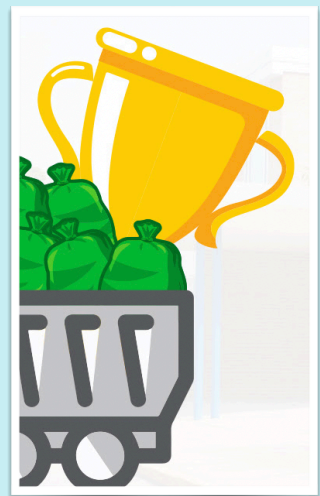
To commemorate Arbor Day this year, each third-grade student will receive a sapling to take home and plant. Students will learn how to plant the saplings and how to care for them over time. Students also will learn how seeds turn into saplings and saplings grow into trees.

We thank the Old Tappan Environmental Commission for their generous donation of saplings and for their time to provide instruction to our youngsters.

RECYCLING CHALLENGE - OVER 1,300 POUNDS OF PLASTIC FILM!

CDW participated in the NexTrex Recycling Challenge for a third consecutive year. With the help of the community and local businesses, CDW collected 1,384 pounds of plastic film! Our middle school placed among the top two participating schools nationwide and earned a bench made of recyclable material! As part of this challenge, the seventh-grade students collected the plastic from the outside collection bins, weighed the bundles, and logged the totals. Along the way, the students learned about the positive effect that recycling can have on resources, as well as sustainability.

Thank you to the Old Tappan Environmental Commission for sharing this Recycling Challenge with us!





Drama Program Performs On Stage

Elementary school students collaborated on stage to perform this year's production of *Beauty and The Beast, Jr.*

The TBD students collaborated on stage to share their performances of *Beauty and The Beast, Jr.* After many weeks and hours of off-stage practice, the cast delighted audiences with two shows that highlighted the theme of valuing characters' inward characteristics, such as kindness, over superficial ones, such as appearance. This timeless theme was important for audience members of all ages.

The cast, comprised of second graders through fourth graders, took to the stage with confident speaking roles, joyful singing, and energetic dancing.



STUDENT INVOLVEMENT

Productions are possible because of the dedicated work of our students. However, students would not have these experiences if it were not for the collaboration of their families, who value these experiences.

Theater Arts

Students hone soft-skills when involved in the performing arts.

Teamwork!



Thank you to the PTO, Ms. Boyce, and the parent-volunteers for their many hours of work!



Stage and Sound

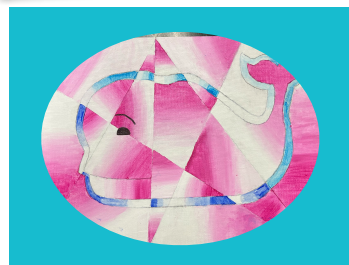


Students learned about sound and projection as they worked with the stage equipment.

Showcase of Student Artwork

Art programs benefit children's development by augmenting students' fine motor skills, visual learning, and visual planning.

The CDW students learned about pop art through the work of master, Claes Oldenburg. Using his work as a model, the students created large-sized, three-dimensional renditions of popular snacks. They learned about proportions and scale. Maintaining a focus on pop culture items, students also explored screen-printing and elements of cubism with related projects.



LEARNING FROM MASTERS

Studying the art masters provides springboards for learning and creating.

Gustav Klimt



Inspired by Klimt's works, TBD students learned about symbolism and abstract art. Their focus masterpieces were *Tree of Life*, *Lady in Gold*, and *Baby Cradle* from Klimt's golden phase.

Learning Together!

Through on-site expertise, students learn about design systems.

Middle school Design Thinking students had an up-close opportunity to learn about the District's technology infrastructure.

With Ms. Budanskaya, our Technology Coordinator and our technology department of one, as their guide, the students had the chance to dive a little deeper into how CDW's technology allows them to access the internet via a wireless connection. They also got a glimpse of the middle school's Domain Name System (DNS). The experience was interactive, as the students traveled to the wiring closet and were able to see concepts that might otherwise remain abstract.

Technology infrastructure is composed of building blocks. The pieces work together to form systems. Through STEM classes, students learn about planning, designing, and prototyping, which are all elements critical to technology byproducts. Students see how process and product relate within systems!



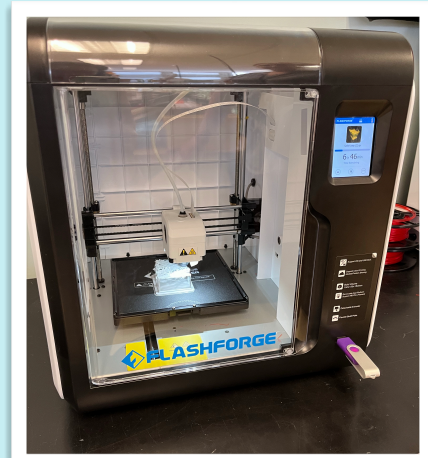
“The real technology - behind all our other technologies - is language.”

- Andrei Codrescu



TECHNOLOGY TO TEACH CODING AND PROBLEM-SOLVING

Middle school students use 3D printers to bring their creative designs and prototypes to life. Building from their design-thinking lessons, students learn how to use computer-aided coding and drafting design programs. These programs are used to design object prototypes that are brought to the 3D printer for manufacturing. Once in the production phase, students have the opportunity to see their prototypes being built. In this phase, students sometimes see their design flaws, which is part of the learning process. If changes need to be made, students return to the design step and make adjusts to their coded work. It's a cycle!



Summer Skill-Booster Program

Size

Edit



OLD TAPPAN SCHOOL DISTRICT



S U M M E R S K I L L - B O O S T E R
2 0 2 3

UPDATE

We are excited to offer the Summer Skill-Booster Program again this summer to all Old Tappan students currently enrolled in Kindergarten through Grade 8. Sessions have been set, and it is time to register! [Click here to find more information about the program and links to register for a summer session.](#) Space is limited, so register early! Registration will close on June 30, 2023.

When signing up for a session, the AM sessions are designed to review the material presented to your child in his/her current grade level (If your child is in 1st grade, sign him/her up for a 1st-grade session.). The PM sessions are designed to preview material for your child's next grade level (If your child is in 1st grade, sign him/her up for a 2nd-grade session.).

**[Click HERE](#) for Summer Program and
Registration Information**



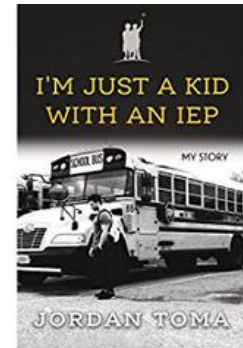
Region III Consortium

Join us for a night with Jordan Toma



Social Media Phenomenon

**Author of I'm Just a Kid
with An IEP**



May 3, 2023 @ 7 pm

NVRHS @ Demarest Auditorium

Please RSVP (Link) by April 6th

Target Audience ... Parents and Special Education Teams

Region III	Ms. Cara Bayer, Region III Coordinator
Alpine	Ms. Krista Grinkin, Supervisor of Special Education
Closter	Ms. Patricia Eichenlaub, Director of Special Services
Demarest	Ms. Anna Kuzdraj, Director of Special Education
Harrington Park	Ms. Celeste Bonura, Director of Special Programs
Haworth	Dr. Kylie Porcelli, Supervisor of Special Education
Northvale	Ms. Kimberly Faustini, Supervisor of Special Education
Norwood	Ms. Keri Regina, Director of Special Education
N.V.R.H.S.	Ms. Barbara Battaglia, Director of Special Education
Old Tappan	Ms. Abbe Lewites, Director of Special Education
Valley Regional Programs	Dr. Blair Rosenthal, Director/Principal of VRP

Click [HERE](#) for the RSVP LINK

Old Tappan 2022-2023 School Year Calendar - REVISED

September

1&2 Staff Reports
Prof. Dev. Days - Faculty
5 Labor Day - Closed
6 **First Day - Students**
12:30 PM Dismissal
Prof. Dev. Day - Faculty
26 Rosh Hashanah - Closed

SEPTEMBER (18)						
S	M	T	W	Th	F	S
				1	2	3
4	5	6	7	8	9	10
11	12	13	14	15	16	17
18	19	20	21	22	23	24
25	26	27	28	29	30	

February

20 Presidents' Day - Closed
20-24 February Recess- Closed

FEBRUARY (15)						
S	M	T	W	Th	F	S
			1	2	3	4
5	6	7	8	9	10	11
12	13	14	15	16	17	18
19	20	21	22	23	24	25
26	27	28				

October

5 Yom Kippur-Closed
10 Columbus Day -
12:30 PM Dismissal
Prof. Dev. Day - Faculty

OCTOBER (20)						
S	M	T	W	Th	F	S
						1
2	3	4	5	6	7	8
9	10	11	12	13	14	15
16	17	18	19	20	21	22
23	24	25	26	27	28	29
30	31					

March

MARCH (23)						
S	M	T	W	Th	F	S
			1	2	3	4
5	6	7	8	9	10	11
12	13	14	15	16	17	18
19	20	21	22	23	24	25
26	27	28	29	30	31	

November

10 & 11 NJEA - Closed
23 **12:30 PM Dismissal**
24&25 Thanksgiving
Recess - Closed

NOVEMBER (18)						
S	M	T	W	Th	F	S
		1	2	3	4	5
6	7	8	9	10	11	12
13	14	15	16	17	18	19
20	21	22	23	24	25	26
27	28	29	30			

April

7 Good Friday - Closed
10-14 Spring Recess - Closed

APRIL (14)						
S	M	T	W	Th	F	S
						1
2	3	4	5	6	7	8
9	10	11	12	13	14	15
16	17	18	19	20	21	22
23	24	25	26	27	28	29
30						

December

23 **12:30 PM Dismissal**
26-30 Holiday Recess-Closed

DECEMBER (17)						
S	M	T	W	Th	F	S
				1	2	3
4	5	6	7	8	9	10
11	12	13	14	15	16	17
18	19	20	21	22	23	24
25	26	27	28	29	30	31

May

29 Memorial Day - Closed

MAY (22)						
S	M	T	W	Th	F	S
	1	2	3	4	5	6
7	8	9	10	11	12	13
14	15	16	17	18	19	20
21	22	23	24	25	26	27
28	29	30	31			

January

16 Martin Luther King Day-Closed
Prof. Dev. Day - Faculty

JANUARY (21)						
S	M	T	W	Th	F	S
1	2	3	4	5	6	7
8	9	10	11	12	13	14
15	16	17	18	19	20	21
22	23	24	25	26	27	28
29	30	31				

June

19 **12:30 PM Dismissal**
20 **12:30 PM Dismissal**
Last Day for Students*
Date was changed from 6/23 because three (3) emergency closings were not used. Last two days of school are 12:30 PM dismissals.

JUNE (17)						
S	M	T	W	Th	F	S
				1	2	3
4	5	6	7	8	9	10
11	12	13	14	15	16	17
18	19	20	21	22	23	24
25	26	27	28	29	30	

Adopted: 1/24/2022
Revised: 4/24/2023

If necessary, due to unexpected closings, the April vacation may be abbreviated in part or in whole. Therefore, no plans, which cannot be changed, should be made for the Spring Recess. The Board of Education reserves the right to make adjustments to the calendar as deemed necessary.

*Three (3) emergency closing days have been built into the school calendar. In the event these days are not used, they will be "given back" through a reduction in the number of school days. When this information becomes available, it will be communicated to parents/guardians following a decision by the Board of Education.

	Students	Staff
Sept.	18	20
Oct.	20	20
Nov.	18	18
Dec.	17	17
Jan.	21	22
Feb.	15	15
March	23	23
April	14	14
May	22	22
June	17	17
Total*	185	188